





ABHEDANANDA MAHAVIDYALAYA,
DEPARTMENT OF BOTANY
LIST OF EXCURSIONS

YEAR	DATE	PLACE	NO. OF STUDENTS		NO. OF TEACHERS	REMARKS	PICTURE
2015-16	06/12/2015	TILPARA,	12		2	FOR COLLECTION AND FAMILIAR WITH LOCAL WILD PLANT VEGETATION	
		M	F	2			
		6	6				
		SAINTHIA			Dr.Debashis Bandhayopadhyay & Dr.AbiraBannerjee		
2016-17	05/12/2016	SONAJHURI,BOLPUR	8		2	FOR COLLECTION OF BOANICAL SPECIMENS AND IDENTIFICATION OF PLANTS	
		M	F	2			
		3	5				
					Dr.DebashisBandhayopadhyay Dr.AbiraBannerjee		
2017-18	12/12/2017	SONAJHURI,BOLPUR	15		3	FOR COLLECTION OF BOANICAL SPECIMEN AND IDENTIFICATION OF PLANTS	
		M	F	Dr.DebashisBandhayopadhyay, Dr.AbiraBannerjee, & Kiran Kumar Mondal			
		7	8				
2018-19	26/11/2018-30/11/2018	DOARS(JALPAIGURI)	15		2	FOR COLLECTION OF BOANICAL SPECIMEN AND IDENTIFICATION OF PLANTS	
		M	F	Kiran Kumar Mondal & Dr.AbiraBannerjee			
		LAVA(KALIMPONG)	6		9		

Sample scanned copy of field report of a selected student

THE UNIVERSITY OF BURDWAN

Field Project On Plant Systemtics

B.Sc ; SEM-III ; Paper : CC-VI

Botany honours

Roll No. :- 170330100010

Reg No. :- 201701022318 of 2017-18

EXAMINED

LONG BOTANICAL EXCURSION TO DOOARS AND LAVA

Total numbers of students : 15

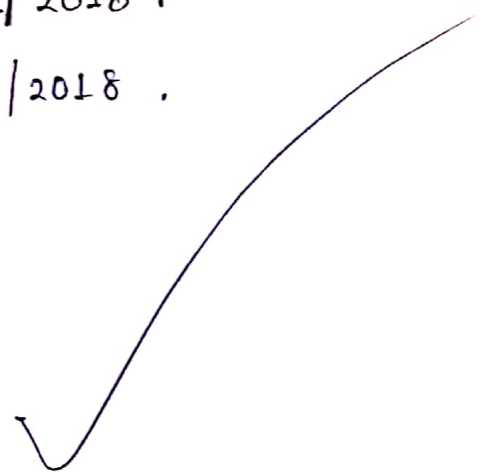
Name of teachers guided : Kiran Kumar Mondal,
Abina Banerjee.

The geographical position of excursion :

Dooars, Jalpaiguri,
Lava, Kalimpong.

Date of arrival : 26/11/2018.

Date of departure : 30/11/2018.





■ Bindu, (Doons),



LONG BOTANICAL EXCURSION TO DOOARS AND LAVA

We, the students of Botany, 3rd sem, of Abhedananda Mahavidyalaya, Sainthia, went to a long excursion to Dooars and Lava under the guidance of our college teachers.

It was 26th November, 2018, we all assembled at Sainthia station at 11:50 pm. and availed at the 'Kanchan Kanya Express', which departed at 10:30 am. tomorrow at 'New Mal Junction'. Then we went to hotel and after some rest we started our journey. About 2 pm on 27th November we rushed towards the 'Santale Khola'. There we saw the luxuriant vegetation including the hill forest and the 'Hanging Bridge'. There we collected many types of ferns and pteridophytes. Then about 4 pm. we went to the 'Rocky Islands'. There we saw the beauty of 'Murti' rivers. Then we arrived back to our hotel.

The next day, 28th November, 2018, we again started our journey to 'Thalong'. From here we saw the whole beauty of 'Jaldhaka' rivers and 'Bhutan borders'. Then we went 'Bindu', the borders of India and Bhutan; there we saw the 'Bindu Barnage' and the landscape with Jaldhaka Rivers, hills and forests.



EXAMINED
EXAMINED



That day when we were back from 'Bindu' we saw the beauty of 'Chapramari Wildlife Forest' and there we collected different types of ferns. Also we saw the beauty of 'Chel' river when we went towards the 'Tista Barrage'. At about 4:30 pm. we reached 'Tista Barrage'. There we saw water dam. Then we back to our hotel at evening.

Next day, on 29th November, 2018, in morning at 7 am we started our journey from Malbazar to Lava. On the way, we collected Lycopodium sp, Pteris sp., Pinus sp. cone, Funaria sp., About 11 am we arrived Lava and after some rest we went to "Kagyu Thakchen Ling Monastery", the Buddhist temple and the side scene of the Monastery. There we collected Selaginella sp., Marchantia sp., Then we back to our hotel.

Next day, on 30th November, 2018, in morning at 7 am we started again our journey to 'Changu'. On the way, at "Kolakham", on the first morning, we see the beauty of snow covered 'Kangchenjunga' peak; and then we went to 'Changu' falls. 'Changu' falls was about to 1000 meters lower. There we collected Equisetum sp, Anthoceros sp, Selaginella sp, Pellia sp., Pteris sp., Then we back to hotel.



EXAMINED.



Then after some rest, we back to New Mal Junction from Lava at about 4pm. On the way to Malbazar we collected Coffee seeds; and also visited tea garden, there we collected some tea leaves. There also we see Black peppers and Rubbers plants; also a rubbers factory, there we saw the processing of rubbers.

At about 6 pm on that day, we all gathered to New Mal Junction. About 6:20 pm we arrived in 'Kanchan Kanya Express'.

On the next day, 1st December, 2018, in the early morning about 4:45 am at Sainthia Junction, we all back.

✓
EXAMINED

TEACHER'S SIGNATURE

Amondal

14/3/2019